

VUpoint

NVR 4 Canali PoE

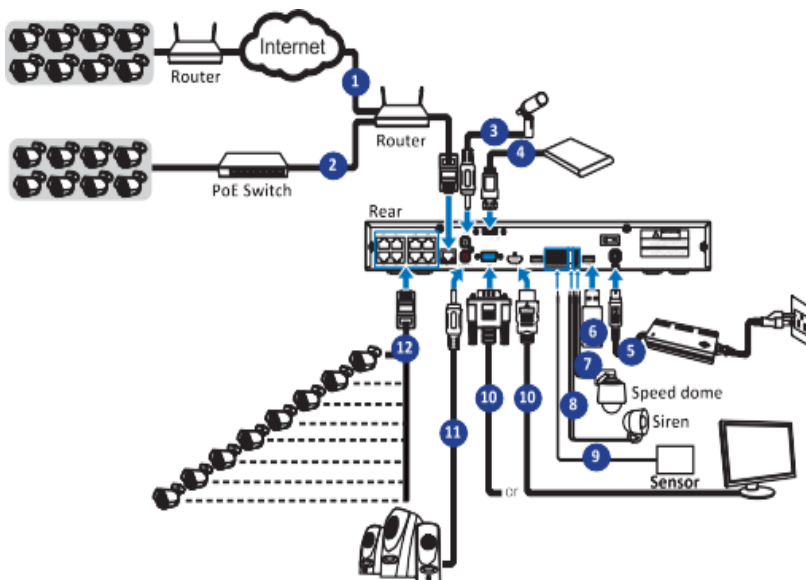


P/N: RVNVR044K1RA

Guida Rapida

Installazione

Diagramma di Connessione



- 1) È possibile connettersi ad altre telecamere IP da remoto tramite Internet.
- 2) Ingresso Ethernet RJ45 CAT.5E o superiore per la connettività locale. È possibile connettersi ad altre telecamere IP tramite la rete locale.
- 3) Audio vocale bidirezionale.
- 4) Possibilità di un disco rigido esterno per il backup dei file memorizzati sull'NVR.
- 5) Cavo di alimentazione specifico (48 V/2 A, connettore DIN a 4 pin).
- 6) Unità flash USB per il backup, l'aggiornamento della telecamera o del sistema.
- 7) Uscita RS-485 per pilotare una telecamera speed dome.
- 8) Uscita di allarme esterno per collegamenti tipo una sirena.
- 9) Ingressi di Allarme per sensori di allarme esterni.
- 10) Uscita video dell'NVR HDMI o VGA per connessioni a Monitor e/o TV
- 11) Uscita altoparlanti se si desidera ascoltare l'audio in diretta o la riproduzione audio dall'NVR.
- 12) Quando si collegano telecamere IP PoE. Potrebbe essere necessario fino a 1 minuto prima che le telecamere inizino a trasmettere il video all'NVR.

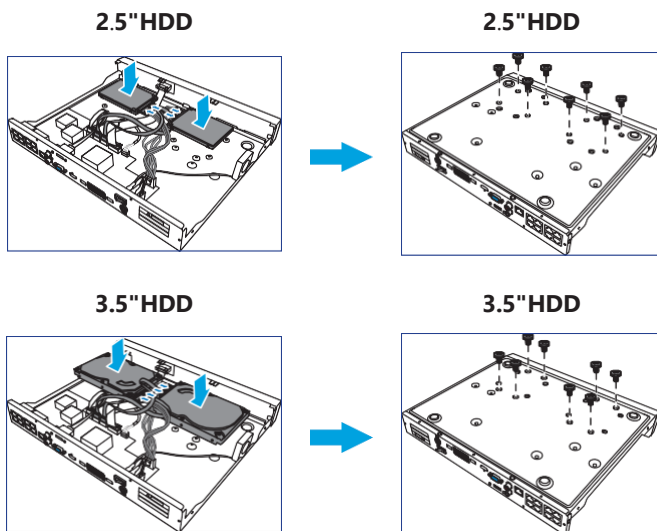
Installazione Hard Disk (HDD)on

L' NVR supporta due Hard Disk SATA 3.5" o 2.5".

ATTENZIONE:

NON installare o rimuovere l'unità disco rigido mentre il dispositivo è ACCESO.

1. Collegare i cavi dati e di alimentazione ai due dischi rigidi e posizionare i dischi rigidi sul case dell'NVR.
2. Capovolgere con cautela la custodia dell'NVR e fissare le unità disco rigido all'NVR con le otto viti.



Opzioni di configurazione del NVR

È possibile configurare la telecamera utilizzando uno dei seguenti metodi:


- 1 Aggiungi prima l'NVR al Cloud RISCO e quindi configura
- 2 Configura prima l'NVR, poi aggiungilo al Cloud RISCO


1 Aggiungi prima l'NVR al Cloud RISCO e quindi Configura


Step 1

 Installare il disco rigido nell'NVR e collegarlo al router.


Passo 2

 Apri il browser e vai su: www.riscocloud.com/ic

 Accedi con le credenziali di amministratore dell'installatore


 Aggiungi un sito o seleziona un sito esistente > Fai clic sulla scheda Video >

+ Aggiungi dispositivo video



The screenshot displays the RISCO Cloud web interface. At the top, the header includes the RISCO logo, navigation tabs for 'SITI' and 'AZIENDA', and user information for 'Zeno (Sgro Enzo)' with an 'Indietro' button. Below the header, a dashboard shows site details for 'TEST RISCO' (ID: 1676970), maintenance status 'Illimitato', and cloud status 'Abilitato'. A breadcrumb trail at the bottom of the dashboard reads: 'INFORMAZIONI SITO | CENTRALE (0) | CENTRALE OPERATIVA MS (0) | VIDEO (0) | VIDEO DOORBELL (0) | SMART HOME (0) | +Aggiungi scheda'. The 'VIDEO (0)' tab is selected and highlighted with a red dashed box. On the left sidebar, the 'DISPOSITIVI VIDEO' section is active. In the main content area, a blue button labeled '+ Aggiungi dispositivo video' is also highlighted with a red dashed box. An arrow points from this button to a message that states: 'Nessun dispositivo video è stato aggiunto. Per aggiungere un dispositivo video fai clic sul pulsante Aggiungi dispositivo video'.

Passo 3

 Imposta le informazioni sul NVR:

- ✓ Inserisci il **Nome Dispositivo**
- ✓ Selezione **NVR**
- ✓ Selezione **VUpoint AI**
- ✓ Inserisci il **Numero** Seriale della telecamera (stampato sulla scatola e sulla telecamera)

Click **Continua** quando fatto.

AGGIUNGI DISPOSITIVO VIDEO

X

1

2

3

4

Tipo dispositivo

Attivazione

Controllo firmware

Opzioni

NOME DISPOSITIVO

NVR

DISPOSITIVO VIDEO

☒ NVR
 ☐ Telecamera IP

TIPO

☒ VUpoint AI
 ☐ VUpoint
 ☐ Altro (0/0) ⓘ

NUMERO DI SERIE

792398623

ⓘ Dove trovare il numero di serie sull'etichetta del prodotto

RISCO

Street Name 1, City, Country

Device Name

Serial Number

Continua

Annulla

Passo 4

ID Definisci la password di amministratore e fai clic su [Continua](#)

Nota: Se l’NVR IP è già inizializzato, questo passaggio può essere saltato

AGGIUNGI DISPOSITIVO VIDEO

<

1

2

3

4

Tipo dispositivo

Attivazione

Controllo firmware

Opzioni

IMPOSTA LA PASSWORD DELL'AMMINISTRATORE

- La lunghezza deve essere di 8 ~ 16 caratteri
- La password non può essere come il nome utente
- Sono consentite solo lettere maiuscole, lettere minuscole, cifre, caratteri speciali. Devono contenere 2 di questi
- I caratteri speciali includono ` ~ ! @ # \$ % ^ & * () - _ = + \ | [] { } ; : ' " , . < > / ?

Continua

Annulla

Passo 5

⬆ se richiesto fare click su Upgrade Firmware fare clic per **aggiornare** il firmware per le funzionalità più recenti.

Nota: Se il firmware è già aggiornato, questa schermata non viene presentata e viene notificato che la versione del firmware è l'ultima disponibile.

ADD VIDEO DEVICE

1

2

3

4

Device Type

Activation

Firmware Check

Options

A new firmware update is available for this device.

We strongly recommend to upgrade it, to ensure best possible experience

CURRENT FIRMWARE VERSION

Version 2.3.4

NEW FIRMWARE VERSION

Version 2.3.5

Release Notes:

• Added AI-based Smart Intrusion Detection for better accuracy.

• Enhanced night vision clarity with updated infrared algorithms.

• Improved video compression with H.265+ encoding.

• Reduced system boot time by 25%.

• Fixed delayed motion detection alerts during high network usage.

• Resolved storage issues causing missed recordings at 95% capacity.

• Addressed rare crashes when switching between live and playback modes.

• Optimized stability for remote access via the mobile app.

Upgrade Firmware

Cancel

Skip Firmware Upgrade

AGGIORNAMENTO FIRMWARE

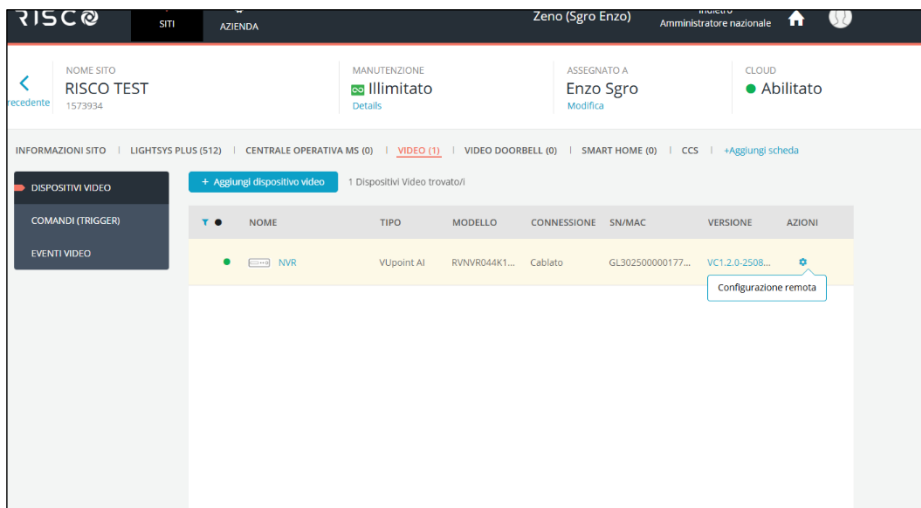
Ultima versione del firmware già aggiornata (VC39.24.1.1.4-250716).

Al momento non sono disponibili aggiornamenti.


OK

Passo 6

L'NVR è stata aggiunto al sito. Fare clic su **Configurazione remota** per iniziare la configurazione.




The screenshot displays the Risco web interface. At the top, the header includes the Risco logo, navigation tabs for 'SITI' and 'AZIENDA', and user information for 'Zeno (Sgro Enzo)' with the role 'Amministratore nazionale'. Below the header, a sidebar on the left contains a 'precedente' button and a menu with 'DISPOSITIVI VIDEO' (selected), 'COMANDI (TRIGGER)', and 'EVENTI VIDEO'. The main content area shows a summary for 'NOME SITO: RISCO TEST' and '1573934'. It includes sections for 'MANUTENZIONE' (Illimitato), 'ASSEGNATO A' (Enzo Sgro), and 'CLOUD' (Abilitato). A breadcrumb trail indicates the current location: 'INFORMAZIONI SITO > LIGHTSYS PLUS (512) > CENTRALE OPERATIVA MS (0) > VIDEO (1) > VIDEO DOORBELL (0) > SMART HOME (0) > CCS > +Aggiungi scheda'. A table lists the video devices, with one entry for 'NVR' (VUpoint AI, RVNV8044K1...). A tooltip labeled 'Configurazione remota' points to a gear icon in the 'AZIONI' column of the NVR row.


	NOME	TIPO	MODELLO	CONNESSIONE	SN/MAC	VERSIONE	AZIONI
	NVR	VUpoint AI	RVNV8044K1...	Cablatto	GL30250000177...	VC1.2.0-2508...	

Impostazione da HandyApp (per uso futuro)

In alternativa, puoi utilizzare la HandyApp per aggiungere l'NVR al cloud RISCO.

Passo 1

 Scaricare la **HandyApp** dall'App Store/Google Play

 Scansiona il codice QR nell'app



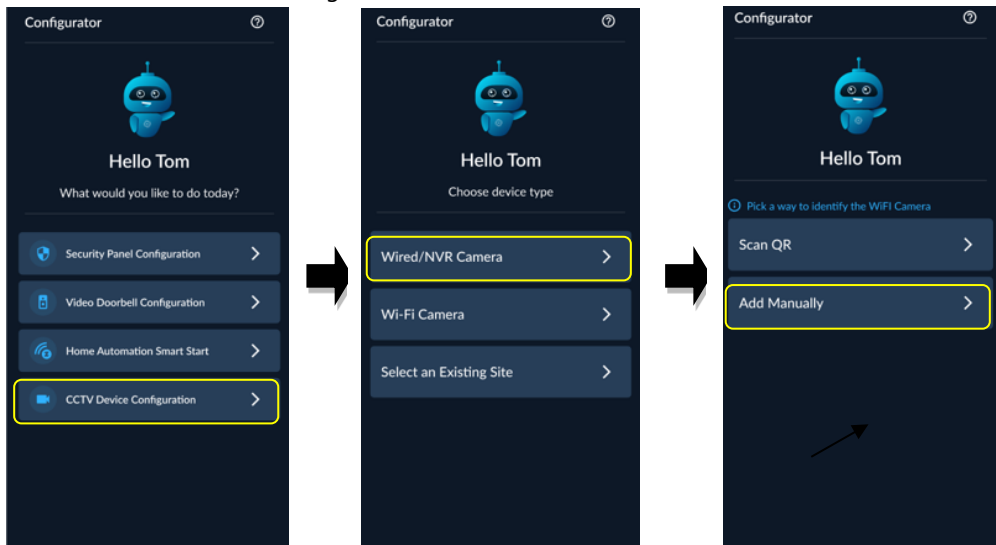
OR



Passo 2

Aggiungi la telecamera IP al cloud RISCO tramite HandyApp

Procedere come indicato di seguito




✓ Seguire le istruzioni sullo schermo. L'NVR è ora pronta per funzionare tramite cloud.

2 Configura prima l'NVR, poi aggiungilo a RISCO Cloud


Passo 1

 Installare il disco rigido nell'NVR e collegare l'NVR al router.

Passo 2

 Installa RISCO Search Tool per individuare l'indirizzo IP della telecamera e quindi fai clic su





Search

Upgrade

Config

Stream Config

OSD Config

Recovery

Initialization

Import/Export

Reboot

Change Password

Filtration

IP

<input type="checkbox"/>	No.	IP	Media Port	Web Port	Channel	Device Name	Device Type	Device Version	Net Mask	Gateway	MAC
<input type="checkbox"/>	1	10.0.0.102	0	80	2	IP CAMERA	IP CAMERA	VC47.55.1.1.2-250...	255.255.255.0	10.0.0.1	
<input type="checkbox"/>	2	10.0.0.104	9000	80	1	IP Camera	IP Camera	V43.45.8.2.4.1_24...	255.255.255.000	010.000.000.001	
<input type="checkbox"/>	3	10.0.0.105	0	80	1	IP CAMERA	IP CAMERA	VC31.35.1.2.0-250...	255.255.255.0	10.0.0.1	
<input type="checkbox"/>	4	10.0.0.106	0	80	1	IP CAMERA	IP CAMERA	VC31.35.1.2.0-250...	255.255.255.0	10.0.0.1	
<input type="checkbox"/>	5	10.0.0.107	0	80	1	IP CAMERA	IP CAMERA	VC31.35.1.2.0-250...	255.255.255.0	10.0.0.1	
<input type="checkbox"/>	6	10.0.0.108	0	80	1	RPW2A	RPW2A	VC39.24.1.1.4-250...	255.255.255.0	10.0.0.1	
<input type="checkbox"/>	7	10.0.0.109	9000	80	1	IPCamera	IPCamera	V40.45.8.2.4.1_24...	255.255.255.000	010.000.000.001	
<input type="checkbox"/>	8	10.0.0.110	0	80	1	RPW1B	RPW1B	VC39.24.1.1.4-250...	255.255.255.0	10.0.0.1	
<input type="checkbox"/>	9	10.0.0.112	0	80	1	RPW3A	RPW3A	VC39.24.1.1.4-250...	255.255.255.0	10.0.0.1	
<input checked="" type="checkbox"/>	10	10.0.0.181	0	80	32	VUpoint 32 Channel AI	N2032	VC1.2.0-250612	255.255.255.000	010.000.000.001	
<input type="checkbox"/>	11	10.0.0.227	0	80	1	IP Camera	IP Camera	VC54.24.1.2.2-250...	255.255.255.0	10.0.0.1	

User Info

Device Info

User Name

IP

Media Port

Web Port

Password

Gateway

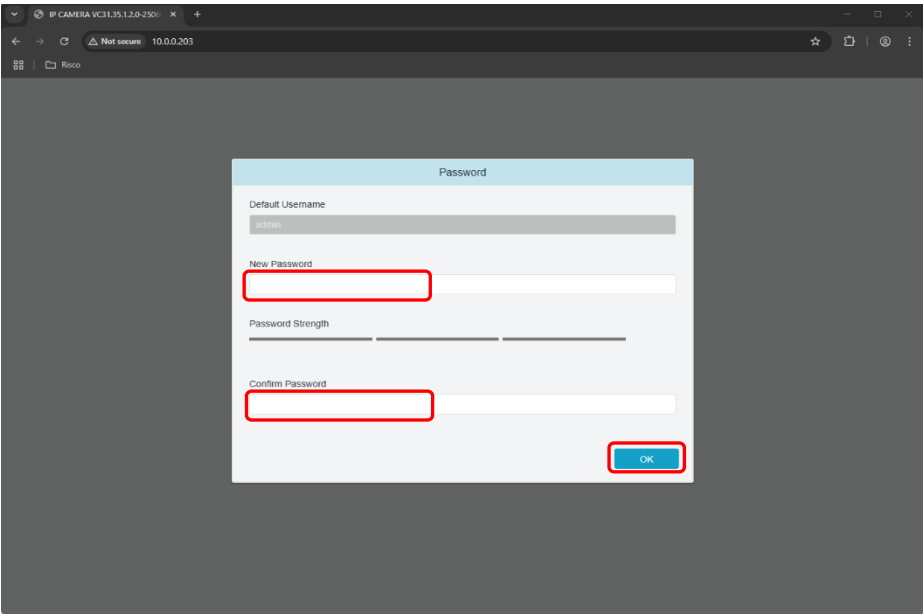
Net Mask

Net Mode

Modify

Passo 3

Inserisci l'indirizzo IP del NVR nel browser > Imposta password amministratore e premi



Passo 4

Fare clic sulla scheda Impostazioni remote > e configura i parametri del NVR

Channel

Channel | Live |

Image Control |

Video Parameters | Capture |

PTZ | Video Cover

Storage

Schedule | Disk

Alarm

I/O | Exception |

Combined Alarm |

Voice Prompts | Deterrence |

Disarming

Event

Event Settings | Recognition |

Statistics

Network

General | DNS | Email |

HTTPS | IP Filter |

Platform Access |

Cloud Service

System

IP Channels

PoE Power

	Channel	PoE Band Mode	Operation	Status	IP Address	Port	Device Type	Protocol	MAC Address	Software Version	Manufacturer
<input type="checkbox"/>	CH1	Auto									
<input type="checkbox"/>	CH2	Auto									
<input type="checkbox"/>	CH3	Auto									
<input type="checkbox"/>	CH4	Auto									

☐ Automatic Camera Addition

Delete

Quick Add

Default Password

Modify IPC admin Password

Priority of PoE Channels

Restore IP Channel Connection

Export IPC/import IPC

Refresh

Una volta completata la configurazione, è possibile aggiungere il dispositivo al RISCO Cloud. Ripetere la procedura dal passaggio 2 nella sezione "**Aggiungi prima l’NVR al RISCO Cloud, poi configura**" per ogni NVR da aggiungere.

12

Specifiche Tecniche

Video	12MP, 8MP, 5MP, 3MP, 2MP (1080P), 1.3MP (960P), 1.0MP (720P)
Larghezza di banda in ingresso	76M
Larghezza di banda in uscita	76M
Prestazioni	
Compressione	Audio: G.711A;G.711U Video : H.264/H.264+/H.265/H.265+
Velocità	4K:45fps 4MP:90fps 2MP:180fps
Registrazione	1080P:180fps Max 4 CH playback
Network	
Connessione Remota	Up to 640 Users
WEB	IE10/11 Safar V12.1 e Superiori Firefox V.52 e Superiori Google chrome V.57 e Superiori Edge V.79 e Superiori
Protocolli	TCP/IP, DHCP, IPv4, IPv6, DNS, DDNS, NTP, RTSP, SADP, SMTP, SNMP, UPnP, HTTP, HTTPS
API	RSAPI/Onvif (profilo S/G/T)
Comandi Vocali	Home Device: Google Assistant, Amazon Alexa
Funzione Intelligente	SMD (Rilevazione Pedoni&Veicoli) Immagini Fino a 720P
Interfacce	
P/W Reset	SI
VGA	1 (1024*768, 1280*720, 1280*1024, 1440*900, 1920*1080)

HDMI Ethernet	1 (1024*768, 1280*720, 1280*1024, 1440*900, 1920*1080, 2560*1440(2K), 3840*2160(4K))
	1 RJ45 10/100 Base-T
USB	USB2.0*1(front) USB2.0*1(rear)
Audio	1 in / 1 out
E-sata	1 facoltativo, non incluso
HDD	1SATA HDD, fino a 10TB
RS485	1
Alarm Input/out	4 in /1 Uscite Opzionali
General	
Lingua OSD	English/ French/ Spanish/ Portuguese/ German/ Italian/ Greek/ Danish/ Finnish/ Russian/ Hebrew/ Turkish/ Bulgarian/ Arabic/ Korean/ Japanese/ Thai/ Hindi/ Romanian/ Dutch/ Polish/ Persian/ Hungarian/ Chinese/ Ukrainian
Dimensioni(W xDxH)	300*227*53mm
Peso	≤ 0.98 kg (without HDD, 2.2 lb.)
Alimentazione /assorbimenti	48V/1.2A
Consumo energetico (escluso disco rigido)	3.8W
Temperatura/ umidità di esercizio	Temperatura: -10°C~+50°C (14°F ~ 122°F) Umidità: Less than 90%RH
FCC	SI
CE	SI

UKCA and CE EMC Compliance Statement

Hereby, RISCO Group declares that this equipment is in compliance with the essential requirements of the UKCA Electromagnetic Compatibility Regulations 2016 and CE Directive 2014/30/EU.

For the UKCA and CE Declaration of Conformity please refer to our website:

www.riscogroup.com

This device complies with part 15 of the FCC Rules. Operation is subject to the following two conditions:

- (1) This device may not cause harmful interference, and
- (2) This device must accept any interference received, including interference that may cause undesired operation

Changes or modifications to this equipment which are not expressly approved by the party responsible for compliance (RISCO Group's.) could void the user's authority to operate the equipment.

FCC Note

This equipment has been tested and found to comply with the limits for a Class B digital device, pursuant to part 15 of the FCC Rules.

These limits are designed to provide reasonable protection against harmful interference in a residential installation. This equipment generates uses and can radiate radio frequency energy and, if not installed and used in accordance with the instructions, may cause harmful interference to radio communications. However, there is no guarantee that interference will not occur in a particular installation. If this equipment does cause harmful interference to radio or television reception, which can be determined by turning the equipment on and off, the user is encouraged to try to correct the interference by one or more of the following measures:

- Reorient or relocate the receiving antenna.
- Increase the separation between the equipment and the receiver.
- Connect the equipment into an outlet on to a different circuit from that to which the receiver is connected.
- Consult the dealer or an experienced radio/TV technician for help.

Standard Limited Product Warranty (“Limited Warranty”)

RISCO Ltd. (“**RISCO**”) guarantee RISCO’s hardware products (“**Products**”) to be free from defects in materials and workmanship when used and stored under normal conditions and in accordance with the instructions for use supplied by RISCO, for a period of (i) 24 months from the date of delivery of the Product (the “**Warranty Period**”). This Limited Warranty covers the Product only within the country where the Product was originally purchased and only covers Products purchased as new.

Contact with customers only. This Limited Warranty is solely for the benefit of customers who purchased the Products directly from RISCO or from an authorized distributor of RISCO. RISCO does not warrant the Product to consumers and nothing in this Warranty obligates RISCO to accept Product returns directly from end users who purchased the Products for their own use from RISCO’s customer or from any installer of RISCO, or otherwise provide warranty or other services to any such end user directly. RISCO’s authorized distributor or installer shall handle all interactions with its end users in connection with this Limited Warranty. RISCO’s authorized distributor or installer shall make no warranties, representations, guarantees or statements to its end users or other third parties that suggest that RISCO has any warranty or service obligation to, or any contractual privity with, any recipient of a Product.

Remedies. In the event that a material defect in a Product is discovered and reported to RISCO during the Warranty Period, RISCO shall accept return of the defective Product in accordance with the below RMA procedure and, at its option, either (i) repair or have repaired the defective Product, or (ii) provide a replacement product to the customer.

Return Material Authorization. In the event that you need to return your Product for repair or replacement, RISCO will provide you with a Return Merchandise Authorization Number (RMA#) as well as return instructions. Do not return your Product without prior approval from RISCO. Any Product returned without a valid, unique RMA# will be refused and returned to the sender at the sender’s expense. The returned Product must be accompanied with a detailed description of the defect discovered (“**Defect Description**”) and must otherwise follow RISCO’s then-current RMA procedure published in RISCO’s website at www.riscogroup.com in connection with any such return. If RISCO determines in its reasonable discretion that any Product returned by customer conforms to the applicable warranty (“**Non-Defective Product**”), RISCO will notify the customer of such determination and will return the applicable Product to customer at customer’s expense. In addition, RISCO may propose and assess customer a charge for testing and examination of Non-Defective Product.

Entire Liability. The repair or replacement of Products in accordance with this Limited Warranty shall be RISCO’s entire liability and customer’s sole and exclusive remedy in case a material defect in a Product is discovered and reported as required herein. RISCO’s obligation and this Limited Warranty are contingent upon the full payment by customer for such Product and upon a proven weekly testing and examination of the Product functionality.

Limitations. This Limited Warranty is the only warranty made by RISCO with respect to the Products. The warranty is not transferable to any third party. To the maximum extent permitted by applicable law, this Limited Warranty shall not apply and will be void if: (i) the conditions set forth above are not met (including, but not limited to, full payment by customer for the Product and a proven weekly testing and examination of the Product functionality); (ii) if the Products or any part or component thereof: (a) have been subjected to improper operation or installation; (b) have been subject to neglect, abuse, willful damage, abnormal working conditions, failure to follow RISCO's instructions (whether oral or in writing); (c) have been misused, altered, modified or repaired without RISCO's written approval or combined with, or installed on products, or equipment of the customer or of any third party; (d) have been damaged by any factor beyond RISCO's reasonable control such as, but not limited to, power failure, electric power surges, or unsuitable third party components and the interaction of software therewith or (e) any failure or delay in the performance of the Product attributable to any means of communication provided by any third party service provider, including, but not limited to, GSM interruptions, lack of or internet outage and/or telephony failure. BATTERIES ARE EXPLICITLY EXCLUDED FROM THE WARRANTY AND RISCO SHALL NOT BE HELD RESPONSIBLE OR LIABLE IN RELATION THERETO, AND THE ONLY WARRANTY APPLICABLE THERETO, IF ANY, IS THE BATTERY MANUFACTURER'S WARRANTY. RISCO does not install or integrate the Product in the end user's security system and is therefore not responsible for and cannot guarantee the performance of the end user's security system which uses the Product or which the Product is a component of.

This Limited Warranty applies only to Products manufactured by or for RISCO. Further, this Limited Warranty does not apply to any software (including operating system) added to or provided with the Products or any third-party software, even if packaged or sold with the RISCO Product. Manufacturers, suppliers, or third parties other than RISCO may provide their own warranties, but RISCO, to the extent permitted by law and except as otherwise specifically set forth herein, provides its Products "AS IS". Software and applications distributed or made available by RISCO in conjunction with the Product (with or without the RISCO brand), including, but not limited to system software, as well as P2P services or any other service made available by RISCO in relation to the Product, are not covered under this Limited Warranty. Refer to the Terms of Service at: <https://riscocloud.com/ELAS/WebUI/UserLogin/License> for details of your rights and obligations with respect to the use of such applications, software or any service. RISCO does not represent that the Product may not be compromised or circumvented; that the Product will prevent any personal injury or property loss by burglary, robbery, fire or otherwise, or that the Product will in all cases provide adequate warning or protection. A properly installed and maintained alarm may only reduce the risk of a burglary, robbery or fire without warning, but it is not insurance or a guarantee that such will not occur or will not cause or lead to personal injury or property loss. CONSEQUENTLY, RISCO SHALL HAVE NO LIABILITY FOR ANY PERSONAL INJURY, PROPERTY DAMAGE OR OTHER LOSS BASED ON ANY CLAIM AT ALL INCLUDING A CLAIM THAT THE PRODUCT FAILED TO GIVE WARNING.

EXCEPT FOR THE WARRANTIES SET FORTH HEREIN, RISCO AND ITS LICENSORS HEREBY DISCLAIM ALL EXPRESS, IMPLIED OR STATUTORY, REPRESENTATIONS, WARRANTIES, GUARANTEES, AND CONDITIONS WITH REGARD TO THE PRODUCTS, INCLUDING BUT NOT LIMITED TO ANY REPRESENTATIONS, WARRANTIES, GUARANTEES, AND CONDITIONS OF MERCHANTABILITY, FITNESS FOR A PARTICULAR PURPOSE, TITLE AND WARRANTIES AGAINST HIDDEN OR LATENT DEFECTS, TO THE EXTENT PERMITTED BY LAW. WITHOUT LIMITING THE GENERALITY OF THE FOREGOING, RISCO AND ITS LICENSORS DO NOT REPRESENT OR WARRANT THAT: (i) THE OPERATION OR USE OF THE PRODUCT WILL BE TIMELY, SECURE, UNINTERRUPTED OR ERROR-FREE; (ii) THAT ANY FILES, CONTENT OR INFORMATION OF ANY KIND THAT MAY BE ACCESSED THROUGH THE PRODUCT SHALL REMAIN SECURED OR NON DAMAGED. CUSTOMER ACKNOWLEDGES THAT NEITHER RISCO NOR ITS LICENSORS CONTROL THE TRANSFER OF DATA OVER COMMUNICATIONS FACILITIES, INCLUDING THE INTERNET, GSM OR OTHER MEANS OF COMMUNICATIONS AND THAT RISCO'S PRODUCTS, MAY BE SUBJECT TO LIMITATIONS, DELAYS, AND OTHER PROBLEMS INHERENT IN THE USE OF SUCH MEANS OF COMMUNICATIONS. RISCO IS NOT RESPONSIBLE FOR ANY DELAYS, DELIVERY FAILURES, OR OTHER DAMAGE RESULTING FROM SUCH PROBLEMS. RISCO WARRANTS THAT ITS PRODUCTS DO NOT, TO THE BEST OF ITS KNOWLEDGE, INFRINGE UPON ANY PATENT, COPYRIGHT, TRADEMARK, TRADE SECRET OR OTHER INTELLECTUAL PROPERTY RIGHT IN ANY EVENT RISCO SHALL NOT BE LIABLE FOR ANY AMOUNTS REPRESENTING LOST REVENUES OR PROFITS, PUNITIVE DAMAGES, OR FOR ANY OTHER INDIRECT, SPECIAL, INCIDENTAL, OR CONSEQUENTIAL DAMAGES, EVEN IF THEY WERE FORESEEABLE OR RISCO HAS BEEN INFORMED OF THEIR POTENTIAL.

Contacting RISCO

RISCO Group is committed to customer service and Product support. You can contact us through our website (www.riscogroup.com) or at the following telephone and fax numbers:

United Kingdom

Tel: +44-(0)-161-655-5500
support-uk@riscogroup.com

Italy

Tel: +39-02-66590054
support-it@riscogroup.com

Spain

Tel: +34-91-490-2133
support-es@riscogroup.com

France

Tel: +33-164-73-28-50
support-fr@riscogroup.com

Belgium (Benelux)

Tel: +32-2522-7622
support-be@riscogroup.com

China

Tel: +86-755-82789285
support-cn@riscogroup.com

Israel

Tel: +972-3-963-7777
support@riscogroup.com

All rights reserved.

No part of this document may be reproduced in any form without prior written permission from the publisher.



© RISCO Group, 08/2025. All rights reserved.

5IN3182