

VUpoint

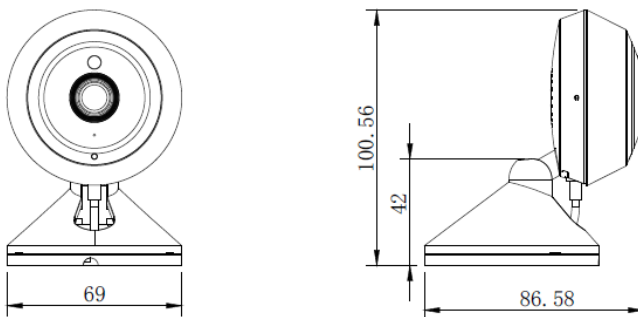
Telecamera Cube 4MP Wi-Fi AI



P/N: RVCM11W340RA

Guida Rapida

Dimensioni



Opzioni di configurazione della Telecamera

È possibile configurare la telecamera utilizzando uno dei seguenti metodi:

- 1 Utilizzando la HandyApp (Uso Futuro)
- 2 Attraverso l'interfaccia Web (PC)

1 Utilizzando la HandyApp (Uso Futuro)

Passo 1

- 🔌 Collegare la telecamera utilizzando l'alimentatore incluso. La telecamera entra automaticamente in modalità **HotSpot**

Passo 2

- 📱 Scaricare la **HandyApp** dagli Store/Google Play

- 🇪🇺 Scansiona il QR per scaricarla



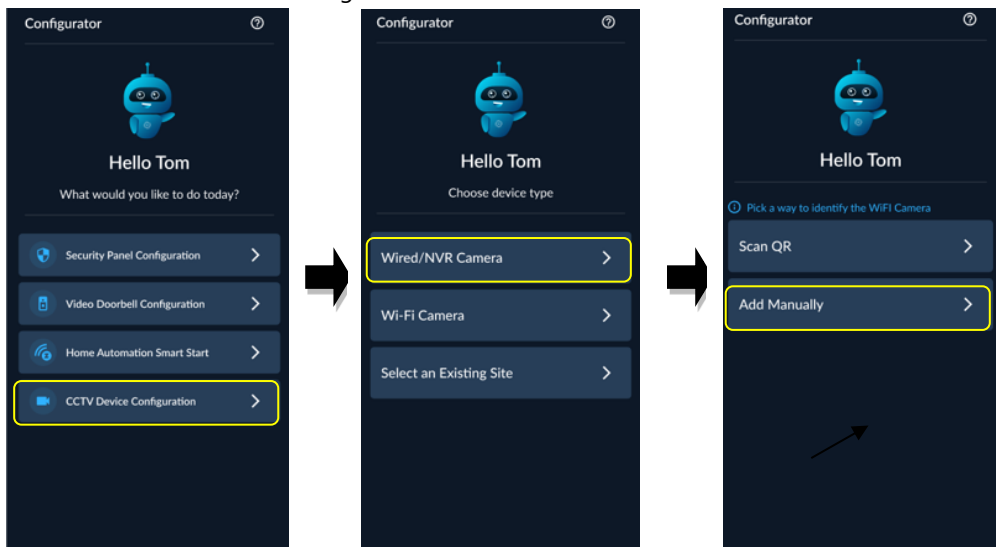
OR



Passo 3

Aggiungere la telecamera al **RISCO Cloud** utilizzando la HandyApp

Selezionare come indicato di seguito



✓ Seguire le istruzioni sullo schermo. La telecamera è ora pronta per funzionare tramite cloud.

2 Attraverso l'interfaccia Web (PC)

Passo 1

🔌 Collegare la telecamera utilizzando l'alimentatore incluso. La telecamera entra automaticamente in modalità **HotSpot**

Passo 2

🖥️ Dal proprio PC connettersi in WI-FI alla rete della telecamera

- SSID: NC- <xxxxxxxxxxxxxxxxxxxx>
- Password: 12345678

Nota: Se non riesci a individuare la rete, premi il pulsante Reset per 5 secondi per ripristinare le impostazioni predefinite della telecamera.

Passo 3

🔍 Installa RISCO Search Tool per individuare l'indirizzo IP della telecamera e quindi fai clic su



Nota: Puoi anche controllare il gateway sulla scheda di rete del tuo PC, quello è l'indirizzo della telecamera. **Normalmente l'indirizzo è 192.168.69.1**

RISCO

Search

Upgrade

Config

Stream Config

OSD Config

Recovery

Initialization

Import/Export

Reboot

Change Password

Filteration

IP

No.	IP	Media Port	Web Port	Channel	Device Name	Device Type	Device Version	Net Mask	Gateway
1	10.0.0.102	0	80	2	IP CAMERA	IP CAMERA	VC47.55.1.1.2-250...	255.255.255.0	10.0.0.1
2	10.0.0.104	9000	80	1	IP Camera	IP Camera	V43.45.8.2.4.1_24...	255.255.255.000	010.000.000.001
3	10.0.0.105	0	80	1	IP CAMERA	IP CAMERA	VC31.35.1.2.0-250...	255.255.255.0	10.0.0.1
4	10.0.0.106	0	80	1	IP CAMERA	IP CAMERA	VC31.35.1.2.0-250...	255.255.255.0	10.0.0.1
5	10.0.0.107	0	80	1	IP CAMERA	IP CAMERA	VC31.35.1.2.0-250...	255.255.255.0	10.0.0.1
6	10.0.0.108	0	80	1	RPW2A	RPW2A	VC39.24.1.1.4-250...	255.255.255.0	10.0.0.1
7	10.0.0.109	9000	80	1	IPCamera	IPCamera	V40.45.8.2.4.1_24...	255.255.255.000	010.000.000.001
8	10.0.0.110	0	80	1	RPW1B	RPW1B	VC39.24.1.1.4-250...	255.255.255.0	10.0.0.1
9	10.0.0.112	0	80	1	RPW3A	RPW3A	VC39.24.1.1.4-250...	255.255.255.0	10.0.0.1
10	10.0.0.111	0	80	32	VUpont 32 Channel AI	N2032	VC1.2.0-250612	255.255.255.000	010.000.000.001
11	10.0.0.227	0	80	1	IP Camera	IP Camera	VC54.24.1.2.2-250...	255.255.255.0	10.0.0.1
12	10.0.0.241	0	80	4	RVNVR044K1RA	RVNVR044K1RA	VC1.2.0-250514	255.255.255.000	010.000.000.001

User Info

Device Info

UserName

admin

IP

10.0.0.104

Media Port

9000

Web Port

80

Password

Gateway

010.000.000.001

Net Mask


255.255.255.000

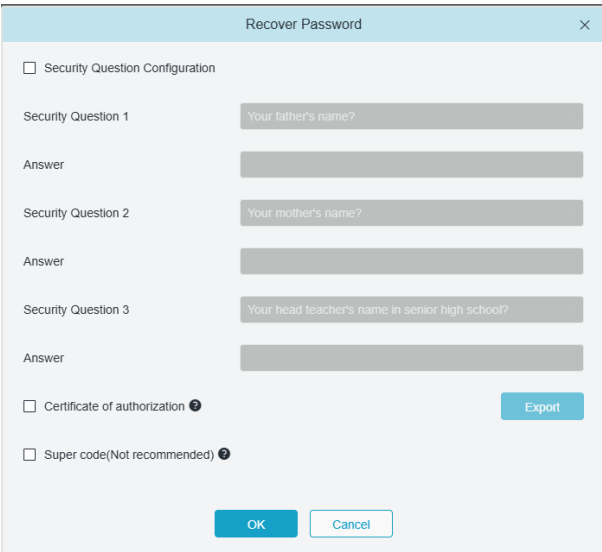
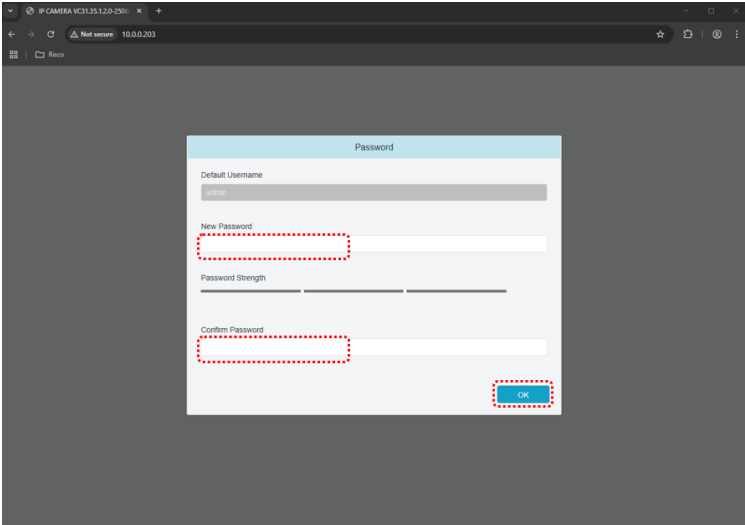
Net Mode

Static

Modify

Passo 4

Inserisci l'indirizzo IP della telecamera nel browser e Imposta la password di Amministratore, le opzioni per il recupero password e premere .

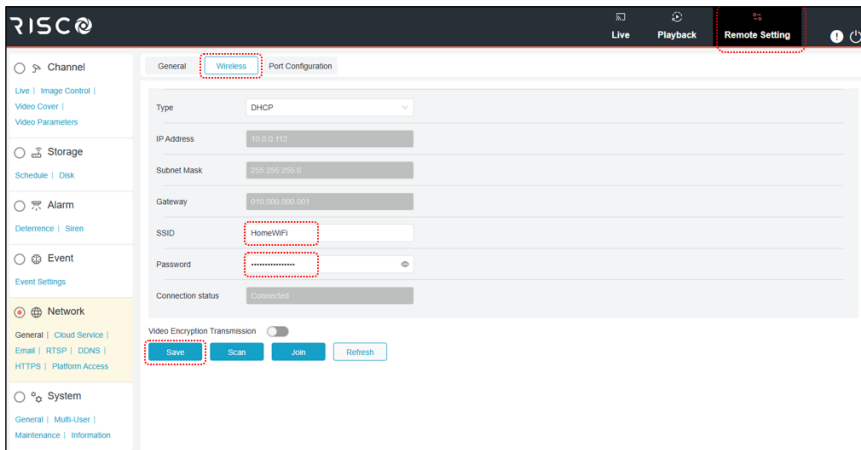


Passo 5

⚙️ Fare clic su Impostazioni remote > scheda Wireless > immettere **SSID** e password **Wi-Fi**.

💾 Clicca su **Save** quando fatto.

IMPORTANTE: Bisogna immettere manualmente i dati SSID e Password perché il bottone **SCAN** in questa fase non è attivo e non effettua la scansione delle reti correttamente.



Passo 6

🌐 Apri il tuo browser e vai su: www.riscocloud.com/ic


🔑 Accedi con le credenziali di amministratore dell'installatore

🏠 Aggiungi un sito o seleziona un sito esistente > Fai clic sulla scheda Video >

+ Aggiungi dispositivo video








Passo 7

 Imposta le informazioni sulla telecamera:

- ✓ Inserisci il **Nome Dispositivo**
- ✓ Selezione **Telecamera IP**
- ✓ Selezione **VUpoint AI**
- ✓ Inserisci il **Numero** Seriale della telecamera (stampato sulla scatola e sulla telecamera)

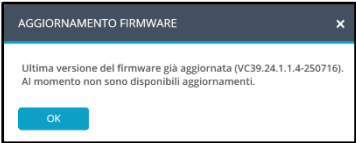
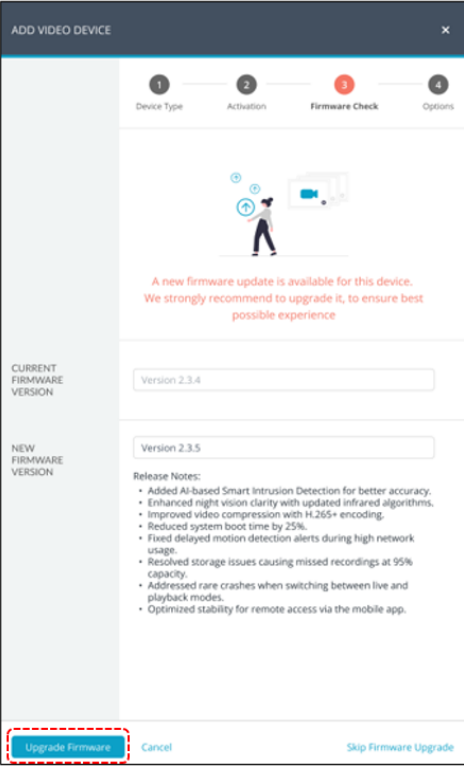
Click **Continua** quando fatto.

AGGIUNGI DISPOSITIVO VIDEO	
	<div style="text-align: center;"> 123 </div> <div style="display: flex; justify-content: space-around; margin-top: 5px;"> Tipo dispositivo Attivazione Controllo firmware </div>
NOME DISPOSITIVO	<input type="text" value="IP Camera"/>
DISPOSITIVO VIDEO	<div style="display: flex; align-items: center;"> <input type="radio"/> NVR <input checked="" type="radio"/> Telecamera IP </div>
TIPO	<div style="display: flex; align-items: center;"> <input checked="" type="radio"/> VUpoint AI <input type="radio"/> VUpoint <input type="radio"/> Altro (0/0) ⓘ </div>
NUMERO DI SERIE	<div style="border: 1px solid #ccc; height: 30px; width: 100%;"></div> <p>ⓘ Dove trovare il numero di serie sull'etichetta del prodotto</p> 
NOTE	<ul style="list-style-type: none"> Le telecamere Wi-Fi senza porta LAN devono essere aggiunte tramite HandyApp: <div style="display: flex; justify-content: space-around; align-items: center;"> <div style="text-align: center;">   </div> <div style="text-align: center;">   </div> </div>

Passo 8

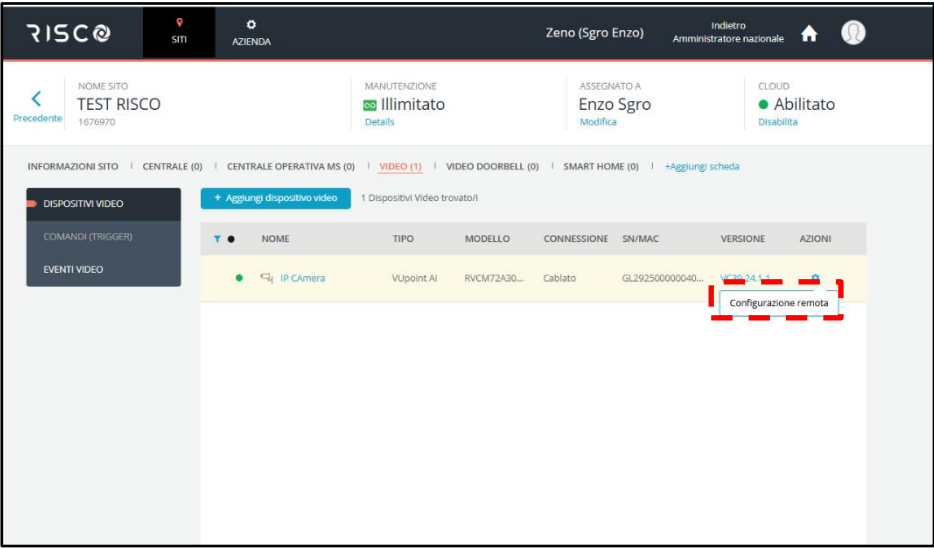
 se richiesto fare click su  fare clic per **aggiornare** il firmware per le funzionalità più recenti.

Nota: Se il firmware è già aggiornato, questa schermata non viene presentata e viene notificato che la versione del firmware è l'ultima disponibile.



Passo 9

⚙ La telecamera IP è stata aggiunta al sito. Fare clic su **Configurazione remota** per iniziare la configurazione.



Lente	
Sensore	1/3"
Max. Risoluzione	4MP 2560(H)×1440(V)
Min. Illuminazione	Colore : 0.005Lux, 0 Lux with IR ON
Tempo Shutter	1/8 S — 1/20000 S
Lunghezza focale (rapporto di zoom)	2.8mm
Max. Aperture Ratio	F 1.6
Angolo Campo Visivo	Orizzontale: 88° Verticale:48° Diagonale:105°
Distanza minima dall'oggetto	0.5m
Tipo Lente	Fissa(M12)
Illuminatore	
LED IR	10 pcs
Distanza IR	10m
Luce Bianca	N/A
Distanza Luce Bianca	N/A
Spia	1
Tipo Luce	Luce Infrarossi
Luce Intelligente Supplementare	N/A
Video	
Compressione Video	H.265/H.264
Main Stream	25fps
Sub-Stream	25fps
Metodo Controllo Bit Rate	CBR/VBR
Bit Rate	256Kbps~4Mbps
Audio	
Compressione Audio	G711A/G711U
Voce Personalizzata	Si (Lullaby)
Network	
Protocollo ONVIF	Yes

Visualizzazione Live Simultanea	Fino a 4 Utenti
Wi-Fi	2.4GHz/5GHz (≤ 20 dBm/ ≤ 23 dBm)
Utenti	Nessuna Restrizione
API	N/A
Clienti	N/A
Web Browser	IE10/11 Safari V12.1 above Firefox V.52 above Google chrome V.57 above Edge V.79 above
AI	
Pedoni & Veicoli	Yes
Tracciamento Pedoni	NO
Attraversamento Linea	Yes
Area di Entrata	Yes
Area di Uscita	Yes
Motion Detection (SMD)	Yes
Rilevamento del Suono	NO
Immagine	
Wide Dynamic Range	DWDR
Switch Giorno/Notte	True D/N (Auto)
Zone Privacy Mask	4 maschere privacy poligonali programmabili
Miglioramento Immagine	BLC/HLC
Metadata	N/A
Metodo di Importazione	APP
Confronto Allarme	N/A
Tabella Informativa	N/A
Modalità Statistica Informativa	N/A
Interfacce	
Uscita Video	N/A
Interfaccia Ethernet	N/A

SD a Bordo Telecamera	Slot Micro SD fino a 1TB (non inclusa)
Bilanciamento Bianchi	Auto
BLC	Si
DNR	Si
Audio	Bidirezionale
Microfono Incorporato	Si
Speaker Incorporato	Si
Allarme	Si
Tasto di Reset	Si
Alimentazione	Tipo-C, DC 5V 1A
Generali	
Materiale	Plastica
Dimensioni	69mm x 100.6mm x 86.6mm
Peso	115g
Condizioni Operative	-35°C ~ +60°C, Umidità ≤ 90%
Lingua	English/Italiano
Varie	
Protezione	\
Sicurezza	General information: TLS1.3 https Stream data: AES256

UKCA and CE RED Compliance Statement

Hereby, RISCO Group declares that this equipment is in compliance with the essential requirements of the UKCA Radio Equipment Regulations 2017 and CE Directive 2014/53/EU.

For the UKCA and CE Declaration of Conformity please refer to our website www.riscogroup.com

Contains FCC ID:2BMPT-274F-N1V1BY

This device complies with part 15 of the FCC Rules. Operation is subject to the following two conditions:

- (1) This device may not cause harmful interference, and
- (2) This device must accept any interference received, including interference that may cause undesired operation

Changes or modifications to this equipment which are not expressly approved by the party responsible for compliance (RISCO Group's.) could void the user's authority to operate the equipment.

FCC Note

This equipment has been tested and found to comply with the limits for a Class B digital device, pursuant to part 15 of the FCC Rules.

These limits are designed to provide reasonable protection against harmful interference in a residential installation. This equipment generates uses and can radiate radio frequency energy and, if not installed and used in accordance with the instructions, may cause harmful interference to radio communications. However, there is no guarantee that interference will not occur in a particular installation. If this equipment does cause harmful interference to radio or television reception, which can be determined by turning the equipment on and off, the user is encouraged to try to correct the interference by one or more of the following measures:

- Reorient or relocate the receiving antenna.
- Increase the separation between the equipment and the receiver.
- Connect the equipment into an outlet on to a different circuit from that to which the receiver is connected.
- Consult the dealer or an experienced radio/TV technician for help.

Standard Limited Product Warranty (“Limited Warranty”)

RISCO Ltd. (“**RISCO**”) guarantee RISCO’s hardware products (“**Products**”) to be free from defects in materials and workmanship when used and stored under normal conditions and in accordance with the instructions for use supplied by RISCO, for a period of (i) 24 months from the date of delivery of the Product (the “**Warranty Period**”). This Limited Warranty covers the Product only within the country where the Product was originally purchased and only covers Products purchased as new.

Contact with customers only. This Limited Warranty is solely for the benefit of customers who purchased the Products directly from RISCO or from an authorized distributor of RISCO. RISCO does not warrant the Product to consumers and nothing in this Warranty obligates RISCO to accept Product returns directly from end users who purchased the Products for their own use from RISCO’s customer or from any installer of RISCO, or otherwise provide warranty or other services to any such end user directly. RISCO’s authorized distributor or installer shall handle all interactions with its end users in connection with this Limited Warranty. RISCO’s authorized distributor or installer shall make no warranties, representations, guarantees or statements to its end users or other third parties that suggest that RISCO has any warranty or service obligation to, or any contractual privity with, any recipient of a Product.

Remedies. In the event that a material defect in a Product is discovered and reported to RISCO during the Warranty Period, RISCO shall accept return of the defective Product in accordance with the below RMA procedure and, at its option, either (i) repair or have repaired the defective Product, or (ii) provide a replacement product to the customer.

Return Material Authorization. In the event that you need to return your Product for repair or replacement, RISCO will provide you with a Return Merchandise Authorization Number (RMA#) as well as return instructions. Do not return your Product without prior approval from RISCO. Any Product returned without a valid, unique RMA# will be refused and returned to the sender at the sender’s expense. The returned Product must be accompanied with a detailed description of the defect discovered (“**Defect Description**”) and must otherwise follow RISCO’s then-current RMA procedure published in RISCO’s website at www.riscogroup.com in connection with any such return. If RISCO determines in its reasonable discretion that any Product returned by customer conforms to the applicable warranty (“**Non-Defective Product**”), RISCO will notify the customer of such determination and will return the applicable Product to customer at customer’s expense. In addition, RISCO may propose and assess customer a charge for testing and examination of Non-Defective Product.

Entire Liability. The repair or replacement of Products in accordance with this Limited Warranty shall be RISCO’s entire liability and customer’s sole and exclusive remedy in case a material defect in a Product is discovered and reported as required herein. RISCO’s obligation and this Limited Warranty are contingent upon the full payment by customer for such Product and upon a proven weekly testing and examination of the Product functionality.

Limitations. This Limited Warranty is the only warranty made by RISCO with respect to the Products. The warranty is not transferable to any third party. To the maximum extent permitted by applicable law, this Limited Warranty shall not apply and will be void if: (i) the conditions set forth above are not met (including, but not limited to, full payment by customer for the Product and a proven weekly testing and examination of the Product functionality); (ii) if the Products or any part or component thereof: (a) have been subjected to improper operation or installation; (b) have been subject to neglect, abuse, willful damage, abnormal working conditions, failure to follow RISCO's instructions (whether oral or in writing); (c) have been misused, altered, modified or repaired without RISCO's written approval or combined with, or installed on products, or equipment of the customer or of any third party; (d) have been damaged by any factor beyond RISCO's reasonable control such as, but not limited to, power failure, electric power surges, or unsuitable third party components and the interaction of software therewith or (e) any failure or delay in the performance of the Product attributable to any means of communication provided by any third party service provider, including, but not limited to, GSM interruptions, lack of or internet outage and/or telephony failure. BATTERIES ARE EXPLICITLY EXCLUDED FROM THE WARRANTY AND RISCO SHALL NOT BE HELD RESPONSIBLE OR LIABLE IN RELATION THERETO, AND THE ONLY WARRANTY APPLICABLE THERETO, IF ANY, IS THE BATTERY MANUFACTURER'S WARRANTY. RISCO does not install or integrate the Product in the end user's security system and is therefore not responsible for and cannot guarantee the performance of the end user's security system which uses the Product or which the Product is a component of.

This Limited Warranty applies only to Products manufactured by or for RISCO. Further, this Limited Warranty does not apply to any software (including operating system) added to or provided with the Products or any third-party software, even if packaged or sold with the RISCO Product. Manufacturers, suppliers, or third parties other than RISCO may provide their own warranties, but RISCO, to the extent permitted by law and except as otherwise specifically set forth herein, provides its Products "AS IS". Software and applications distributed or made available by RISCO in conjunction with the Product (with or without the RISCO brand), including, but not limited to system software, as well as P2P services or any other service made available by RISCO in relation to the Product, are not covered under this Limited Warranty. Refer to the Terms of Service at: <https://riscocloud.com/ELAS/WebUI/UserLogin/License> for details of your rights and obligations with respect to the use of such applications, software or any service. RISCO does not represent that the Product may not be compromised or circumvented; that the Product will prevent any personal injury or property loss by burglary, robbery, fire or otherwise, or that the Product will in all cases provide adequate warning or protection. A properly installed and maintained alarm may only reduce the risk of a burglary, robbery or fire without warning, but it is not insurance or a guarantee that such will not occur or will not cause or lead to personal injury or property loss. CONSEQUENTLY, RISCO SHALL HAVE NO LIABILITY FOR ANY PERSONAL INJURY, PROPERTY DAMAGE OR OTHER LOSS BASED ON ANY CLAIM AT ALL INCLUDING A CLAIM THAT THE PRODUCT FAILED TO GIVE WARNING.

EXCEPT FOR THE WARRANTIES SET FORTH HEREIN, RISCO AND ITS LICENSORS HEREBY DISCLAIM ALL EXPRESS, IMPLIED OR STATUTORY, REPRESENTATIONS, WARRANTIES, GUARANTEES, AND CONDITIONS WITH REGARD TO THE PRODUCTS, INCLUDING BUT NOT LIMITED TO ANY REPRESENTATIONS, WARRANTIES, GUARANTEES, AND CONDITIONS OF MERCHANTABILITY, FITNESS FOR A PARTICULAR PURPOSE, TITLE AND WARRANTIES AGAINST HIDDEN OR LATENT DEFECTS, TO THE EXTENT PERMITTED BY LAW. WITHOUT LIMITING THE GENERALITY OF THE FOREGOING, RISCO AND ITS LICENSORS DO NOT REPRESENT OR WARRANT THAT: (i) THE OPERATION OR USE OF THE PRODUCT WILL BE TIMELY, SECURE, UNINTERRUPTED OR ERROR-FREE; (ii) THAT ANY FILES, CONTENT OR INFORMATION OF ANY KIND THAT MAY BE ACCESSED THROUGH THE PRODUCT SHALL REMAIN SECURED OR NON DAMAGED. CUSTOMER ACKNOWLEDGES THAT NEITHER RISCO NOR ITS LICENSORS CONTROL THE TRANSFER OF DATA OVER COMMUNICATIONS FACILITIES, INCLUDING THE INTERNET, GSM OR OTHER MEANS OF COMMUNICATIONS AND THAT RISCO'S PRODUCTS, MAY BE SUBJECT TO LIMITATIONS, DELAYS, AND OTHER PROBLEMS INHERENT IN THE USE OF SUCH MEANS OF COMMUNICATIONS. RISCO IS NOT RESPONSIBLE FOR ANY DELAYS, DELIVERY FAILURES, OR OTHER DAMAGE RESULTING FROM SUCH PROBLEMS. RISCO WARRANTS THAT ITS PRODUCTS DO NOT, TO THE BEST OF ITS KNOWLEDGE, INFRINGE UPON ANY PATENT, COPYRIGHT, TRADEMARK, TRADE SECRET OR OTHER INTELLECTUAL PROPERTY RIGHT IN ANY EVENT RISCO SHALL NOT BE LIABLE FOR ANY AMOUNTS REPRESENTING LOST REVENUES OR PROFITS, PUNITIVE DAMAGES, OR FOR ANY OTHER INDIRECT, SPECIAL, INCIDENTAL, OR CONSEQUENTIAL DAMAGES, EVEN IF THEY WERE FORESEEABLE OR RISCO HAS BEEN INFORMED OF THEIR POTENTIAL.

Contacting RISCO

RISCO Group is committed to customer service and Product support. You can contact us through our website (www.riscogroup.com) or at the following telephone and fax numbers:

United Kingdom

Tel: +44-(0)-161-655-5500
support-uk@riscogroup.com

Italy

Tel: +39-02-66590054
support-it@riscogroup.com

Spain

Tel: +34-91-490-2133
support-es@riscogroup.com

France

Tel: +33-164-73-28-50
support-fr@riscogroup.com

Belgium (Benelux)

Tel: +32-2522-7622
support-be@riscogroup.com

China

Tel: +86-755-82789285
support-cn@riscogroup.com

Israel

Tel: +972-3-963-7777
support@riscogroup.com

All rights reserved.

No part of this document may be reproduced in any form without prior written permission from the publisher.



© RISCO Group, 08/2025. All rights reserved.

5IN3174